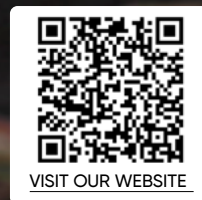




M SERIES

Advanced thermal imaging camera
with full function analysis



VISIT OUR WEBSITE

Professional Handheld Thermal Imaging Camera for Versatile Applications



Interchangeable
Battery System



Complete Image
Annotations



Rugged &
Durable Design



1 Level & Span



Image Modes



Laser Pointer

Manual Focus

Adjusting the manual focus ring allows to see objects clearly on targets as close as 0.1 m (0.33 ft) and still capture sharp images and more accurate results from further away. (M11W, M20W features a focus-free lens.)

WHAT'S IN THE BOX



OPTIONAL ACCESSORIES



Additional
batteries
E097-13-1S1P26650



Pouch
HM-SP01-POUCH



Replacement
Charger
HM-5202ZC



Bracket
HM-AHBR03

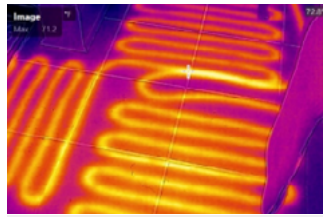


Micro Lens
HM-AHL02-MM650

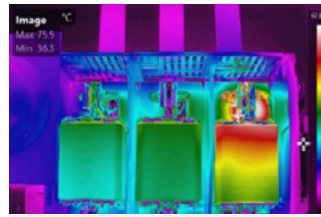
APPLICATIONS



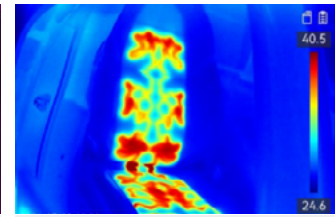
Building Insulation



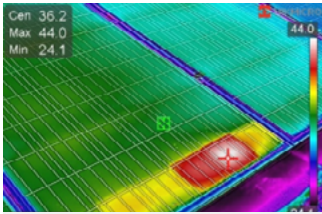
In Floor Heating



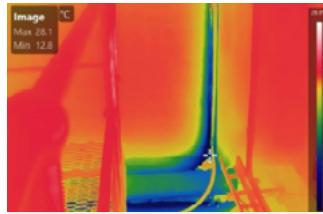
Electrical Cabinet



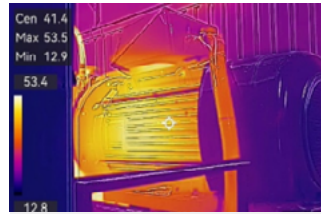
Automotive



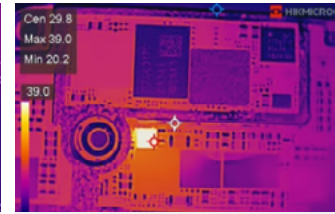
Solar Panel



Freezer Room



Mechanical



PCB



HIKMICRO Viewer

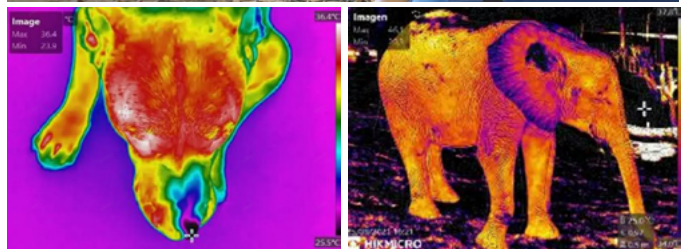
Connect HIKMICRO Viewer app via Wi-Fi to transfer photos or videos from camera to mobile device.



HIKMICRO Analyzer

Compatible with files from HIKMICRO cameras, providing the features you need to simplify your workflow and increase your productivity.

M31T



Model No	M11	M11W	M20W	M20	M31	M60	M31T
Description	Advanced thermal imaging camera with full function analysis						
IR Resolution	192 x 144 (27,648 pixels)	192 x 144 (27,648 pixels)	256 x 192 (49,152 pixels)	256 x 192 (49,152 pixels)	384 x 288 (110,592 pixels)	640 x 480 (307,200 pixels)	384 x 288 (110,592 pixels)
SuperIR	Yes, on captured images						
SuperScene+	-			Electrical Panel, PCB Inspection		-	
FOV (H x V)	25° x 18.7°		50° x 37.2°	25° x 18.8°	41.1°x30.5°	41.9° x 33.3°	41.1°x30.5°
Frequency	25 Hz				30 Hz		
NETD	< 40 mK				< 30 mK		
Visual Camera	3264 x 2448 (8 MP)						
Image Mode	Thermal/Visual/Fusion/PIP/Blending						
Display	640 x 480 Resolution, 3.5" LCD Touch Screen						
Temperature Range	Range -20°C to 150°C (-4°F to 302°F) Range 100°C to 650°C (212°F to 1202°F)				Range -20°C to 150°C (-4°F to 302°F) Range 0°C to 650°C (32°F to 1202°F)		Range 5°C to 40°C (41°F to 104°F)
Focus Mode	Manual Focus	Focus Free	Focus Free	Manual Focus	Manual Focus	Manual Focus	Manual Focus
Min. Focusing Distance	0.1 m (0.33 ft)					0.3 m (0.98 ft)	0.1 m (0.32ft)
Macro Lens	✓						-
Operation Time	6 Hours x 2, Removable Batteries				4 Hours x 2, Removable Batteries		
Extendable Memory Card	Extendable 32 GB Micro SD Card				Extendable 64 GB Micro SD Card		