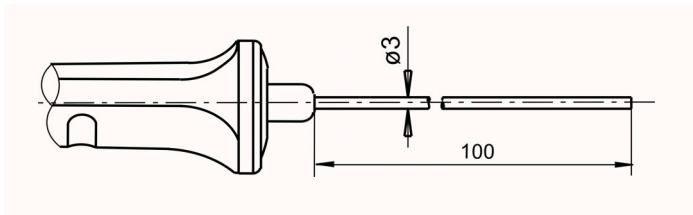


# TEMPERATURE

## Pt100 sensor with handle FPA 106 LxxxxH

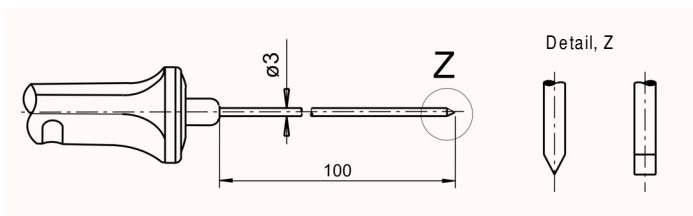


For immersion measurement

Meas. element: Pt100, class B \*  
 Measuring tip: Operative range -70...+500 °C  
 Sheath element, Inconel  
 T<sub>90</sub>: \* 8 s  
 Handle: \* 127 mm  
 Cable: 1.5 m Teflon/Silicone

L = 100 mm **Order no FPA106L0100H**

## Pt100 sensor with handle FPA 123 LxxxxH

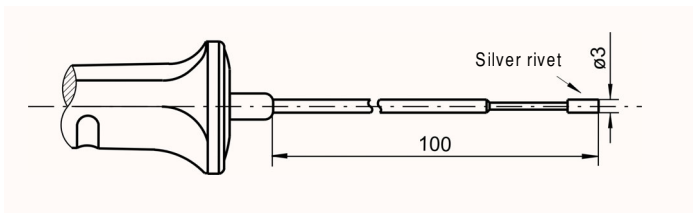


For immersion measurement in plastic and pasty substances

Meas. element: Pt100, class B \*  
 Measuring tip: Operative range -70...+500 °C  
 Penetrating tip  
 T<sub>90</sub>: \* 8 s  
 Handle: \* 127 mm  
 Cable: 1.5 m Teflon / silicone

L = 100 mm **Order no FPA123L0100H**

## Pt100 sensor with handle FPA 124 LxxxxH

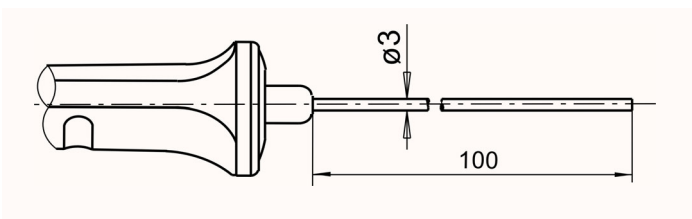


For surface measurement and immersion measurement

Meas. element: Pt100, class B \*  
 Measuring tip: Operative range -50...+300 °C  
 Silver rivet, level  
 T<sub>90</sub>: \* 10 s  
 Handle: \* 127 mm  
 Cable: 1.5 m Teflon / silicone

L = 100 mm **Order no FPA124L0100H**

## NTC sensor with handle FNA 106 LxxxxH

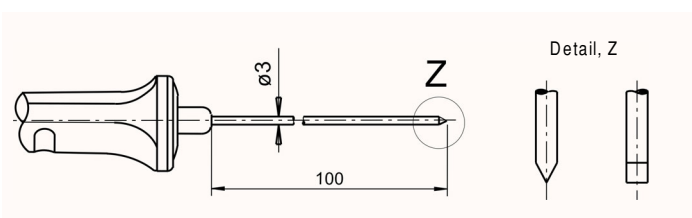


For immersion measurement

Meas. element: NTC \*  
 Measuring tip: Operative range -20...+100 °C  
 Sheath element, Inconel  
 T<sub>90</sub>: \* 8 s  
 Handle: \* 127 mm  
 Cable: 1.5 m PVC

L = 100 mm **Order no FNA106L0100H**

## NTC sensor with handle FNA 123 LxxxxH

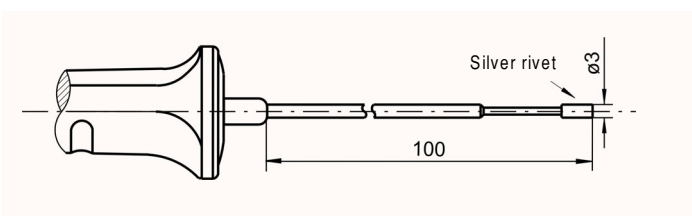


For immersion measurement in plastic and pasty substances

Meas. element: NTC \*  
 Measuring tip: Operative range -20...+100 °C  
 Penetrating tip  
 T<sub>90</sub>: \* 8 s  
 Handle: \* 127 mm  
 Cable: 1.5 m PVC

L = 100 mm **Order no FNA123L0100H**

## NTC sensor with handle FNA 124 LxxxxH

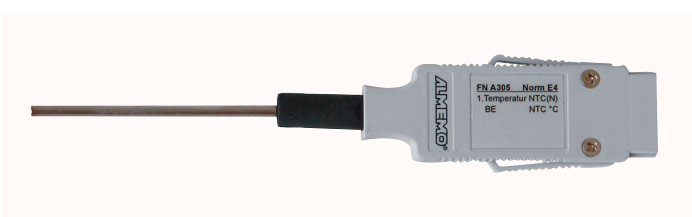


For surface measurement and immersion measurement

Meas. element: NTC \*  
 Measuring tip: Operative range -20...+100 °C  
 Silver rivet, level  
 T<sub>90</sub>: \* 10 s  
 Handle: \* 127 mm  
 Cable: 1.5 m PVC

L = 100 mm **Order no FNA124L0100H**

## NTC sensor FNA 305



For room air measurement

Meas. element: NTC\*  
 Measuring tip: Operative range -10 to +60 °C  
 (non-condensing)  
 Protective tube in stainless steel  
 diameter = 2.4mm, length = 50mm  
 mounted directly on  
 ALMEMO® connector  
 T<sub>90</sub> 8 s

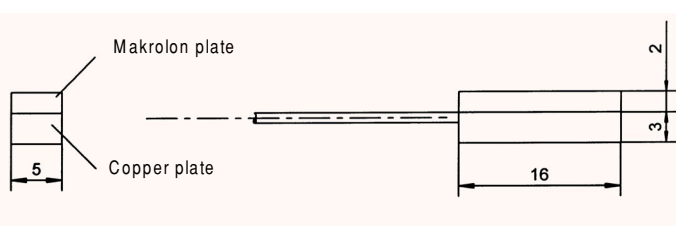
L = 50 mm **Order no FNA305**  
 (No variants available)

**new!**

# TEMPERATURE

**new!**

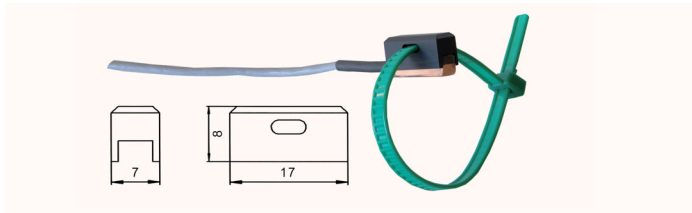
## Pt100 sensor FPA 611 x



For surface measurement

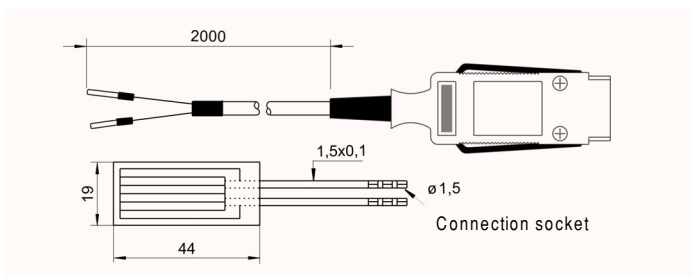
Meas. element	Pt100 class B *
Measuring tip	Operative range see below Copper, level
<b>New</b>	Improved thermal transfer thanks to innovative sensor element and new contact technology
T <sub>90</sub> *	20 s
Cable	2 meters, insulation see below

Surface sensor  
 -10 to +90 °C Cable, PVC **Order no. FPA611**  
 -10 to +110 °C Cable, Teflon  
 for more demanding mechanical stress  
 ALMEMO® connector, resolution 0.01 K  
**Order no. FPA611S01**



Accessories  
 Fixture for fastening with cable ties  
**Order no. ZB9611RM**

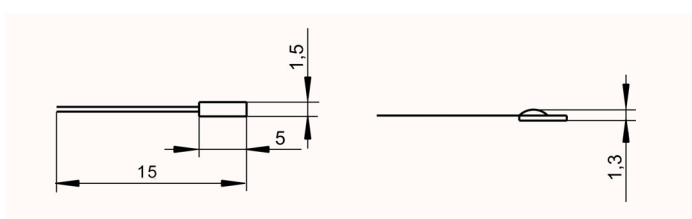
## Pt100 film sensor FPx 685



For surface measurement

Meas. element:	Pt100, class B *
Measuring tip:	Operative range -80...+180 °C Foil, 0.3 mm thick, polyimide insulation
T <sub>90</sub> : *	2 s
With free ends	<b>Order no FP0685</b>
With connection socket	<b>Order no FP96852</b>
ALMEMO® connecting cable, PVC (-20 to +80 °C), 2 meters, with connection pins	<b>Order no ZTA685AK</b>

## Pt100 ceramic chip sensor element FP 0802



Unprotected sensor element for constructing your own sensors

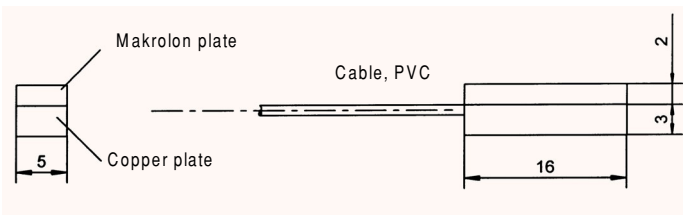
Meas. element:	Pt100, class B *
Measuring tip:	Operative range -50...+400 °C Ceramic chip sensor
Connection wires	10 mm, bare

Ceramic chip sensor **Order no FP0802**

01/2011 We reserve the right to make technical changes.

\* For general technical data, see page 08.03.

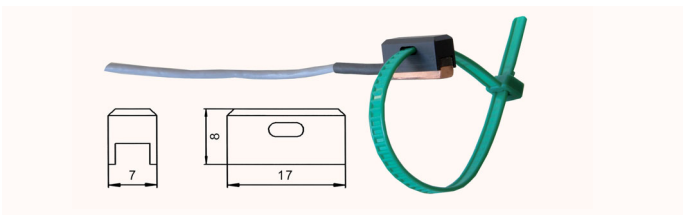
## NTC sensor FNA 611x



For surface measurement

Meas. element: NTC \*  
 Measuring tip: Operative range -10...+90 °C  
 Copper, level  
 T<sub>90</sub>: \* 20 s  
 Cable: 2 m PVC

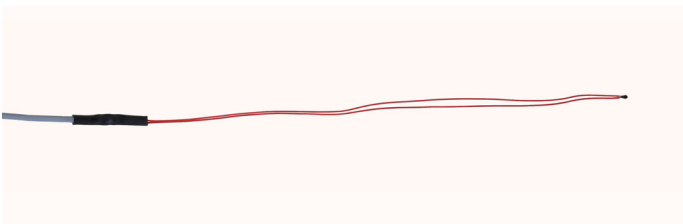
Surface sensor **Order no FNA611**



Accessories  
 Fixture for fastening with cable ties  
**Order no. ZB9611RM**

**new!**

## NTC sensor FN 0001 K



Unprotected sensor element with cable

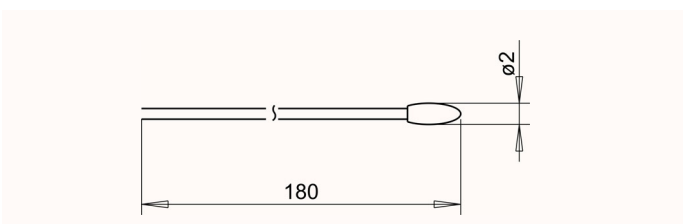


Meas. element NTC\*  
 Measuring tip Sensor element, unprotected  
 Operative range -20 to +100 °C  
 Connection wires approx. 180 mm, Teflon insulation  
 Connecting cable 2 meters, PVC, thin stranded pick-up wire, Operative range -10 to +90 °C  
 Cable juncture, in shrink-fit

NTC sensor with cable  
 Free ends **Order no. FN0001K**  
 Option  
 ALMEMO® connector including assembly  
 Single connectors for 1 sensor Order no. OT9040AS  
 Double connector for 2 sensors Order no. OT9040AS2

**new!**

## NTC sensor element FN 0801



Unprotected sensor element for constructing your own sensors

Meas. element: NTC \*  
 Measuring tip: Operative range -20...+100 °C  
 Sensor  
 Connection wires 180 mm, Teflon insulation

Sensor **Order no FN0001**